

International Journal of Innovative Research in Science, Engineering and Technology

(A High Impact Factor, Monthly, Peer Reviewed Journal)

Visit: www.ijirset.com

Vol. 8, Issue 2, February 2019

Online Social Networking Data for Ranking- Based Location Recommendation

Swapnil Vinayak Wagh, Kailash Patidar, Sudeesh Chouhan, Rishi Kushwah

M.Tech Student, Department of Computer Science Engineering, Shree Satya Sai University of Technology and
Medical Science, Sehore (M.P), India

HOD, Department of Computer Science Engineering, Shree Satya Sai University of Technology and Medical Science,
Sehore (M.P), India

Asst. Professor, Department of Computer Science Engineering, Shree Satya Sai University of Technology and Medical
Science, Sehore (M.P), India

Asst. Professor, Department of Computer Science Engineering, Shree Satya Sai University of Technology and Medical
Science, Sehore (M.P), India

ABSTRACT: The ranking based recommendation plays an essential role in helping people to find important information. Although recent research has studied how to advise recommendations with social and geographical information, some of which have dealt with the problem of starting the new cold users. Because mobility records are often shared on social networks, semantic information can be used to address this challenge. There the typical method is to place them in collaborative content-based filters based on explicit comments, but require a negative design samples for a better learning performance, since the negative user preference is not observable in human mobility. However, previous studies have demonstrated empirically that sampling-based methods do not work well. To this end, we propose a system based on collaborative filtering framework to incorporate semantic content and avoid negative sampling. We then develop an efficient optimization, scaling in a linear fashion with the dimensions of the data and the dimensions of the features, and in a quadratic way with the dimension of latent space. We also establish its relationship with the factorization of the plate matrix plating. Finally, we evaluated recommendation with a large-scale location based social network data set in which users have profiles.

KEYWORDS: Content-aware, implicit feedback, Location recommendation, social network, positive sampling.

I. INTRODUCTION

Recommender System which is part of the Data mining technique. Recommendation systems use different technologies, but they can be classified into two categories: collaborative and content-based filtering systems. Content-based systems examine the properties of articles and recommend articles similar to those that the user has preferred in the past. They model the taste of a user by building a user profile based on the properties of the elements that users like and using the profile to calculate the similarity with the new elements. We recommend location that are more similar to the user's profile. Recommender systems, on the other hand, ignore the properties of the articles and base their recommendations on community preferences. They recommend the elements that users with similar tastes and preferences have liked in the past. Two users are considered similar if they have many elements in common.

One of the main problems of recommendation systems is the problem of cold start, i.e. when a new article or user is introduced into the system. In this study we focused on the problem of producing effective recommendations for new articles: the cold starting article. Collaborative filtering systems suffer from this problem because they depend on previous user ratings. Content-based approaches, on the other hand, can still produce recommendations using article

International Journal of Innovative Research in Science, Engineering and Technology

(A High Impact Factor, Monthly, Peer Reviewed Journal)

Visit: www.ijirset.com

Vol. 8, Issue 2, February 2019

descriptions and are the default solution for cold-starting the article. However, they tend to get less accuracy and, in practice, are rarely the only option.

The problem of cold start of the article is of great practical importance Portability due to two main reasons. First, modern online the platforms have hundreds of new articles every day and actively recommending them is essential to keep users continuously busy. Second, collaborative filtering methods are at the core of most recommendation engines since then tend to achieve the accuracy of the state of the art. However, to produce recommendations with the predicted accuracy that require that items be qualified by a sufficient number of users. Therefore, it is essential for any collaborative adviser to reach this state as soon as possible. Having methods that producing precise recommendations for new articles will allow enough comments to be collected in a short period of time, Make effective recommendations on collaboration possible.

In this paper, we focus on providing location recommendations novel scalable feedback based Collaborative Filtering framework. Avoid sampling negative positions by considering all positions not visited as negative and proposing a low weight configuration, with a classification, to the preference trust model. This sparse weighing and weighting configuration not only assigns a large amount of confidence to the visited and unvisited positions, but also includes three different weighting schemes previously developed for locations.

II. RELATED WORK

Literature survey is the most important step in any kind of research. Before start developing we need to study the previous papers of our domain which we are working and on the basis of study we can predict or generate the drawback and start working with the reference of previous papers.

In this section, we briefly review the related work on Recommendation system and their different techniques.

X. Liu, Y. Liu, and X. Li describe the “Exploring the context of locations for personalized Location recommendations”. In this paper, we decouple the process of jointly learning latent representations of users and locations into two separated components: learning location latent representations using the Skip-gram model, and learning user latent representations Using C-WARP loss [1].

Shuyao Qi, Dingming Wu, and Nikos Mamoulis describe that ,” Location Aware Keyword Query Suggestion Based on Document Proximity” In this paper, we proposed an LKS framework providing keyword suggestions that are relevant to the user information needs and at the same time can retrieve relevant documents Near the user location [2].

H. Li, R. Hong, D. Lian, Z. Wu, M. Wang, and Y. Ge describe the “A relaxed ranking-based factor model for recommender system from implicit feedback,” in this paper, we propose a relaxed ranking-based algorithm for item recommendation with implicit feedback, and design a smooth and scalable optimization method for model’s parameter Estimation [3].

D. Lian, Y. Ge, N. J. Yuan, X. Xie, and H. Xiong describe the “Sparse Bayesian collaborative filtering for implicit feedback,” In this paper, we proposed a sparse Bayesian collaborative filtering algorithm best tailored to implicit feedback, And developed a scalable optimization algorithm for jointly learning latent factors and hyper parameters [4].

X. He, H. Zhang, M.-Y. Kan, and T.-S. Chua describe the “Fast matrix factorization for online recommendation with implicit feedback,” We study the problem of learning MF models from implicit feedback. In contrast to previous work that applied a uniform weight on missing data, we propose to weight Missing data based on the popularity of items. To address the key efficiency challenge in optimization, we develop a new learning algorithm which effectively learns Parameters by performing coordinate descent with memorization [5].

International Journal of Innovative Research in Science, Engineering and Technology

(A High Impact Factor, Monthly, Peer Reviewed Journal)

Visit: www.ijirset.com

Vol. 8, Issue 2, February 2019

F. Yuan, G. Guo, J. M. Jose, L. Chen, H. Yu, and W. Zhang, describe the “LambdaFM: learning optimal ranking with factorization machines using lambda surrogates” In this paper, we have presented a novel ranking predictor Lambda Factorization Machines. Inheriting advantages from both LtR and FM, LambdaFM (i) is capable of optimizing various top-N item ranking metrics in implicit feedback settings; (ii) is very flexible to incorporate context information for context-aware recommendations [6].

Yiding Liu¹, Tuan Anh Nguyen Pham², Gao Cong³, Quan Yuan describe the An Experimental Evaluation of Point of Interest Recommendation in Location-based Social Networks-2017 In this paper, we provide an all-around Evaluation of 12 state-of-the-art POI recommendation models. From the evaluation, we obtain several important findings, based on which we can better understand and utilize POI recommendation Models in various scenarios [7].

Shuhui Jiang, Xueming Qian *, Member, IEEE, **Tao Mei**, Senior Member, IEEE and **Yun Fu**, Senior Member, IEEE” describe the Personalized Travel Sequence Recommendation on Multi-Source Big Social Media In this paper, we proposed a personalized travel sequence recommendation system by learning topical package model from big multi-source social media: travelogues and community-contributed photos. The advantages of our work are 1) the system automatically mined user’s and routes’ travel topical preferences including the topical interest, Cost, time and season, 2) we recommended not only POIs but also travel sequence, considering both the popularity and user’s travel preferences at the same time. We Mined and ranked famous routes based on the similarity between user package and route package [8].

Zhiwen Yu, Huang Xu, Zhe Yang, and Bin Guo describe the “Personalized Travel Package With Multi-Point-of-Interest Recommendation Based on Crowdsourced User Footprints” In this paper, we propose an approach for personalized travel package recommendation to help users make travel plans. The approach utilizes data collected from LBSNs to model users and locations, and it determines users’ preferred destinations using collaborative filtering approaches. Recommendations are generated by jointly considering user preference and spatiotemporal constraints. A heuristic search-based travel route planning algorithm was designed to generate travel packages [9].

Salman Salamatian, Amy Zhang, Flavio du Pin Calmon, Sandilya Bhamidipati, Nadia Fawaz, Branislav Kveton, Pedro Oliveira, Nina Taftk describe the “Managing your Private and Public Data: Bringing down Inference Attacks against your Privacy” In this paper, they propose an ML framework for content-aware collaborative filtering from implicit feedback datasets, and develop coordinate descent for efficient and effective parameter learning [10].

III. PROPOSED SYSTEM

As I studied then I want to propose machine learning for classify reviews and content aware collaborative filtering, find nearby locations i.e. hotels and restaurant then to recommend to user based on positive sampling and achieve the high accuracy and also remove cold-start problem in recommendation system.

In this system, particular recommendation of places for new users. A general solution is to integrate collaborative filtering with content based filtering from this point of view of research, some popular content-based collaboration filtering frameworks, have been recently proposed, but designed on the basis of explicit feedback with favourite samples both positively and negatively. Such as only the preferred samples are implicitly provided in a positive way. Feedback data while it is not practical to treat all unvisited locations as negative, feeding the data on mobility together. With user information and location in these explicit comments frames require pseudo-negative drawings. From places not visited. The samples and the lack of different levels of trust cannot allow them to get the comparable top-k recommendation.

International Journal of Innovative Research in Science, Engineering and Technology

(A High Impact Factor, Monthly, Peer Reviewed Journal)

Visit: www.ijirset.com

Vol. 8, Issue 2, February 2019

System Architecture:

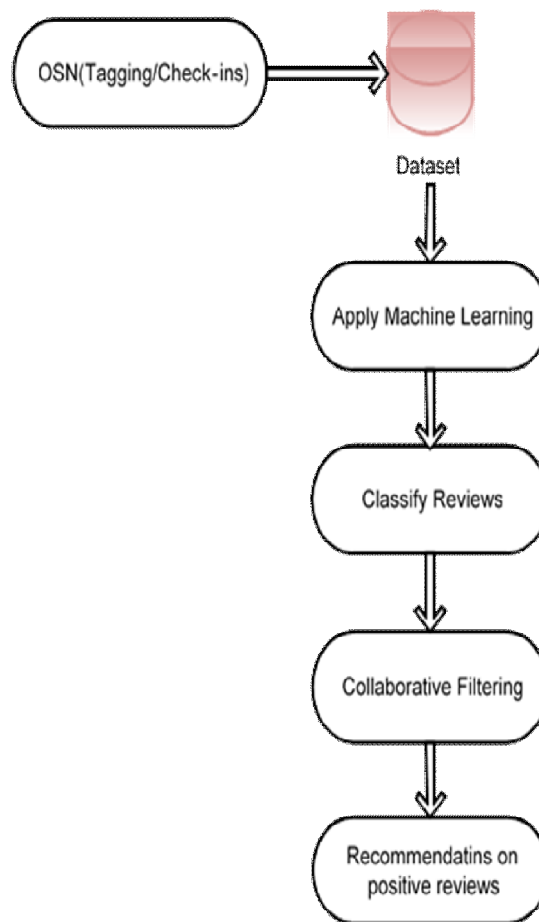


Fig. System Architecture

IV. RESULT AND DISCUSSION

Experimental evaluation is done to compare the proposed system with the existing system for evaluating the performance. The simulation is to platform used is built using Java framework (version JDK 8) on Windows platform. The system does not require any specific hardware to run; any standard machine is capable of running the application.

International Journal of Innovative Research in Science, Engineering and Technology

(A High Impact Factor, Monthly, Peer Reviewed Journal)

Visit: www.ijirset.com

Vol. 8, Issue 2, February 2019

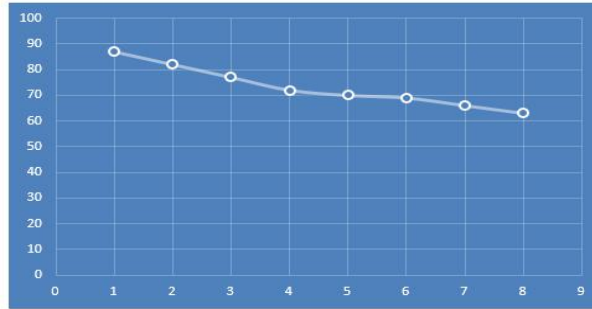


Fig 2: Graph 1

| Sr. No. | Framework | Accuracy |
|---------|-----------|----------|
| 1 | ICCF | 87% |
| 2 | ICF | 82% |
| 3 | geoMF | 77% |
| 4 | GRMF | 72% |
| 5 | IRENMF | 70% |
| 6 | LibFM-1 | 69% |
| 7 | LibFM-3 | 66% |
| 8 | LibFM-10 | 63% |

Table 1: Comparative Result

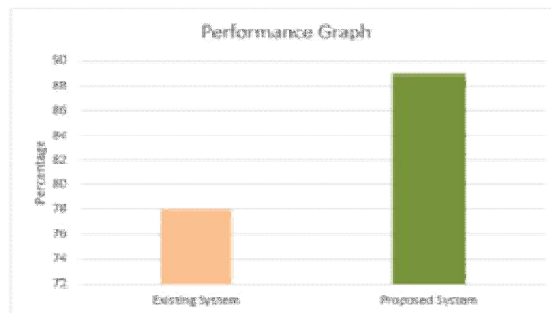


Fig 3: Graph 2

| Sr.No | Existing Approach | Proposed Approach |
|-------|-------------------|-------------------|
| 1 | 78% | 89% |

Table 2: Comparative Result

International Journal of Innovative Research in Science, Engineering and Technology

(A High Impact Factor, Monthly, Peer Reviewed Journal)

Visit: www.ijirset.com

Vol. 8, Issue 2, February 2019

V. CONCLUSION

In this paper, we propose a personalized recommendation framework for collaborative filtering based on content based on the implicit feedback data set and on the development of offspring coordinates for effective parameter learning. We establish the close relationship of collaborative filtering with matrix graphical factorization and demonstrate that user functions really improve the similarity of mobility between users. Therefore, we apply the collaborative filter for position recommendation in a large-scale location data set. Our experiment results indicate that collaborative filtering is superior to five competition baselines, which include the recommendation of two top positions and factoring algorithms based on the classification machine. By comparing different weighting schemes to the negative preference of unvisited places, we observed that the user-oriented schema is higher than the element-oriented schema and that the dispersed configuration and the interval significantly improve the recommendation's performance.

REFERENCES

- [1] Y. Y. Chen, A. J. Cheng, and W. H. Hsu, "Travel recommendation by mining people attributes and travel group types from community-contributed photos," *IEEE Transactions on Multimedia*, vol. 15, no. 6, pp. 1283-1295, Oct. 2015.
- [2] P. Kefalas, P. Symeonidis, and Y. Manolopoulos, "A graph-based taxonomy of recommendation algorithms and systems in LBSNs," *IEEE Transactions on Knowledge and Data Engineering*, vol. 28, no 3, pp.604-622, Mar. 2016.
- [3] P. Peng, L. Shou, K. Chen, G. Chen, and S. Wu, "KISS: knowing camera prototype system for recognizing and annotating places-of-interest," *IEEE Transactions on Knowledge and Data Engineering*, vol. 28, no 4, pp.994-1006, Apr. 2016.
- [4] Personalized Travel Sequence Recommendation on Multi-Source Big Social Media Shuhui Jiang, XuemingQian *, Member, IEEE, Tao Mei, Senior Member, IEEE and Yun Fu, Senior Member, IEEE
- [5] X. Wang, Y. L. Zhao, L. Nie, Y. Gao, W. Nie, Z. J. Zha, and T. S. Chua, "Semantic-based location recommendation with multimodal venue semantics," *IEEE Transactions on Multimedia*, vol. 17, no. 3, pp. 409-419, Mar. 2015.
- [6] S. Jiang, X. Qian, J. Shen, Y. Fu, and T. Mei, "Author topic model based collaborative filtering for personalized poi recommendation," *IEEE Transactions on Multimedia*, vol. 17, no. 6, pp. 907-918, 2015.
- [7] Q. Hao, R. Cai, X. Wang, J. Yang, Y. Pang, and L. Zhang, "Generating location overviews with images and tags by mining usergenerated travelogues," in *Proceedings of the 17th ACM international conference on Multimedia*. ACM, 2009, pp. 801-804.
- [8] Q. Yuan, G. Cong, Z. Ma, A. Sun, and N. M. Thalmann, "Time-aware point-of-interest recommendation," in *Proc. SIGIR*, 2013, pp. 363-372.
- [9] J. D. Zhang and C. Y. Chow, "Spatiotemporal sequential influence modeling for location recommendations: a gravity-based approach," *ACM Transactions on Intelligent Systems and Technology*, vol. 7, no. 1, pp. 11, Jan. 2015.
- [10] J. D. Zhang and C. Y. Chow, "Point-of-interest recommendations in location-based social networks," in *Proc. SIGSPATIAL*, 2016, pp. 26-33.